

East Seram GS PSC Opportunity



One of the most exciting new blocks in Southeast Asia

May 2018

A **New** Approach to Asian Energy

Important notice and disclaimer



Forward-looking statements

Certain statements contained in this presentation, including information as to the future financial or operating performance of Lion and its projects are forward-looking statements. Such forward-looking statements:

- should or can generally be identified by the use of forward looking words such as “anticipate”, “believe”, “expect”, “forecast”, “estimate”, “will”, “could”, “may”, “target”, “plan” and other similar expressions within the meaning of securities laws of applicable jurisdictions, and include earnings guidance and statements of intention about future matters and the outcome and effects of the equity raising. Indications of, and guidelines or outlook on, future earnings, distributions or financial position or performance are also forward looking statements;
- are based upon a number of assumptions and estimates that, while considered reasonable by Lion, are beyond the control of the Company as they are inherently subject to significant technical, business, economic, competitive, political and social uncertainties and contingencies;
- involve known and unknown risks and uncertainties that could cause actual events or results to differ materially from estimated or anticipated events or results reflected in such forward-looking statements; and
- may include, among other things, statements regarding targets, estimates and assumptions in respect of production, prices, operating costs, results, capital expenditures, reserves and resources and anticipated flow rates and are or may be based on assumptions and estimates related to future technical economic, market, political, social and other conditions.

This Document is provided to the recipient on the basis that the recipient understands and acknowledges that it may not rely in any way whatsoever on the Document or other information. Unless legally required, the Company undertakes no obligation to update publicly any forward looking statements, whether as a result of new information, future events or otherwise.

General Disclaimer

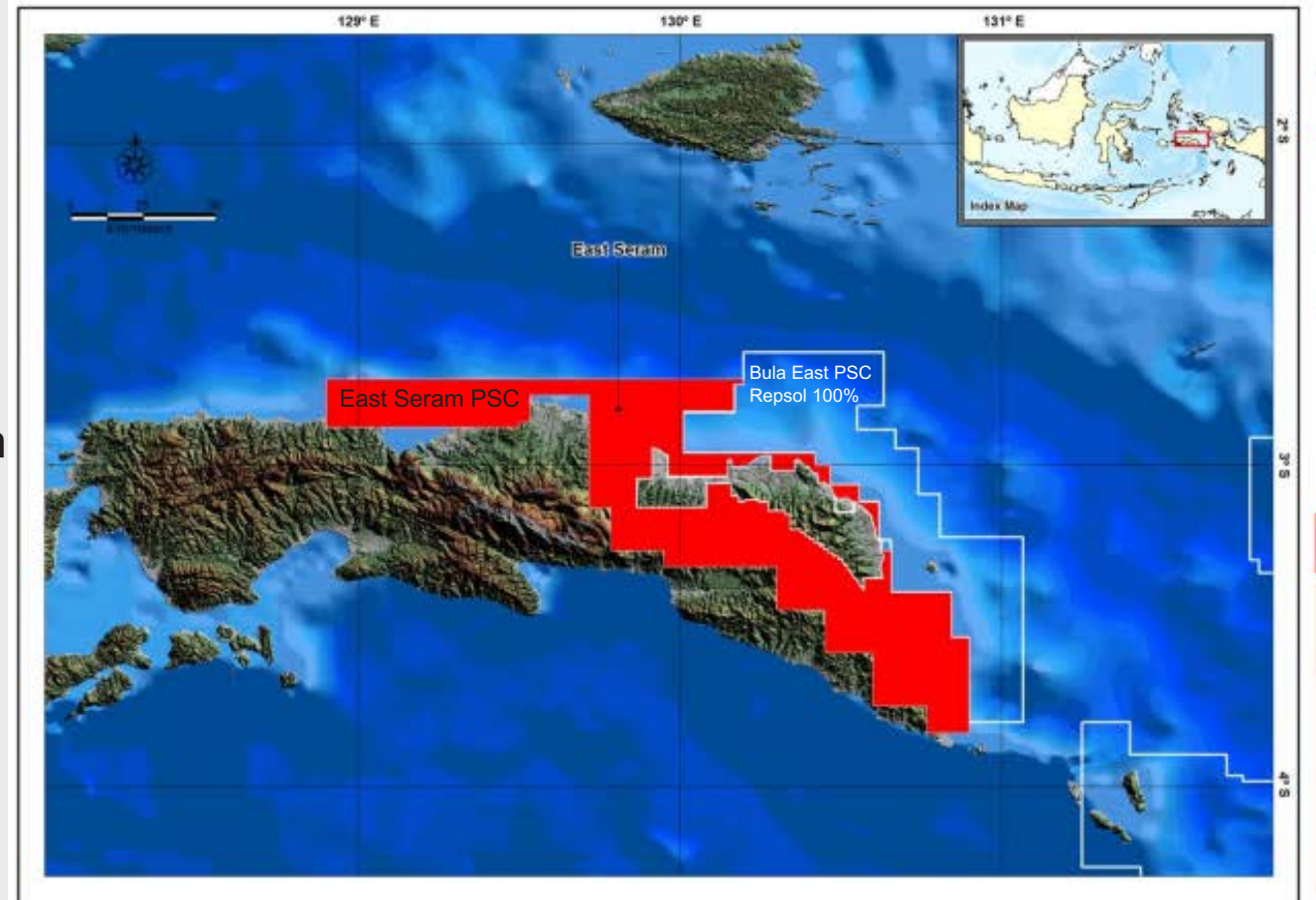
The Company has taken all reasonable care in producing the information contained in this document, however it does not guarantee the accuracy of information or analysis provided. The Company will not be responsible for loss or damage arising from the use of this information. The contents of this document should not be used as a substitute for detailed investigations or analysis and we strongly recommend you obtain independent professional advice before making any investment decisions about the Company.

You may use the information for your own personal use or to inform others about our materials, but you may not reproduce or modify it without our express permission.

East Seram Production Sharing Contract (PSC)

Exceptional 6504 sq km block with Lofin field extension, shallow oil & large LNG gas potential

- Lion has excellent knowledge of Seram Island's hydrocarbon potential.
- We previously operated the Bula Field, we own 2.5% of Seram (Non-Bula) PSC & now we are securing 100% of the East Seram PSC.
- Seram Island is part of a prolific hydrocarbon region
- Seram (Non Bula) PSC contains the 2TCF Lofin discovery and the Lofin structure extends into East Seram
- East Seram's minimum bid requirement is modest (US\$500 K signature bonus and 500 km seismic)
- Acreage of interest to existing Seram PSC partners or major company
- PSC under new Gross Split (GS) terms providing attractive fiscal terms and improved flexibility to Operators



Manageable minimum work program (500km of seismic)

Lion overview - strong background in East Seram area



Team has impressive expertise in area, previously operator of Bula Oil Field (Seram), strong supportive major Indonesian shareholders

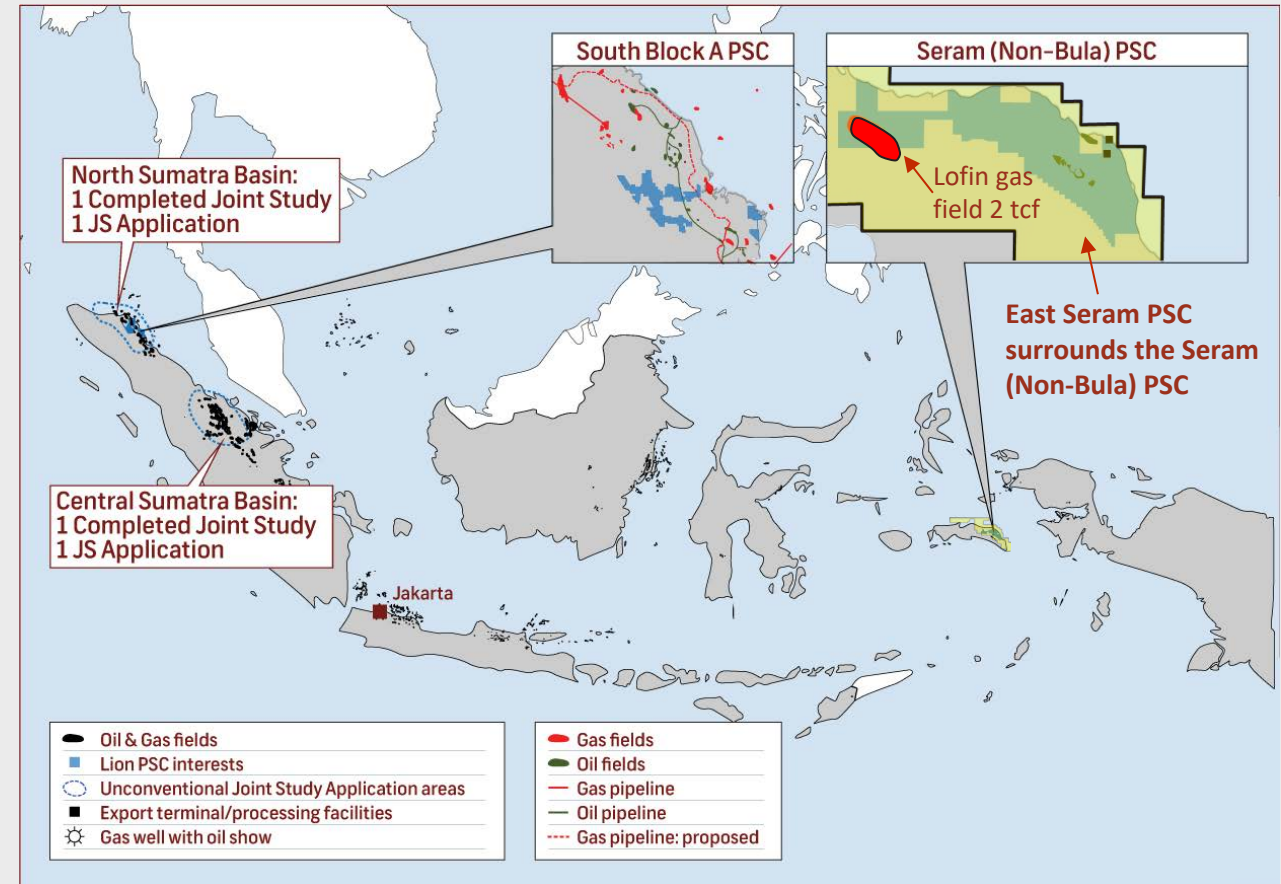
- New management focused on shareholder return

Major shareholders:

- Risco Energy Investments (46%) - supportive, well connected, Indonesian backed
- Tower Energy (5%) - highly respected, Indonesian based

Lion experience in area:

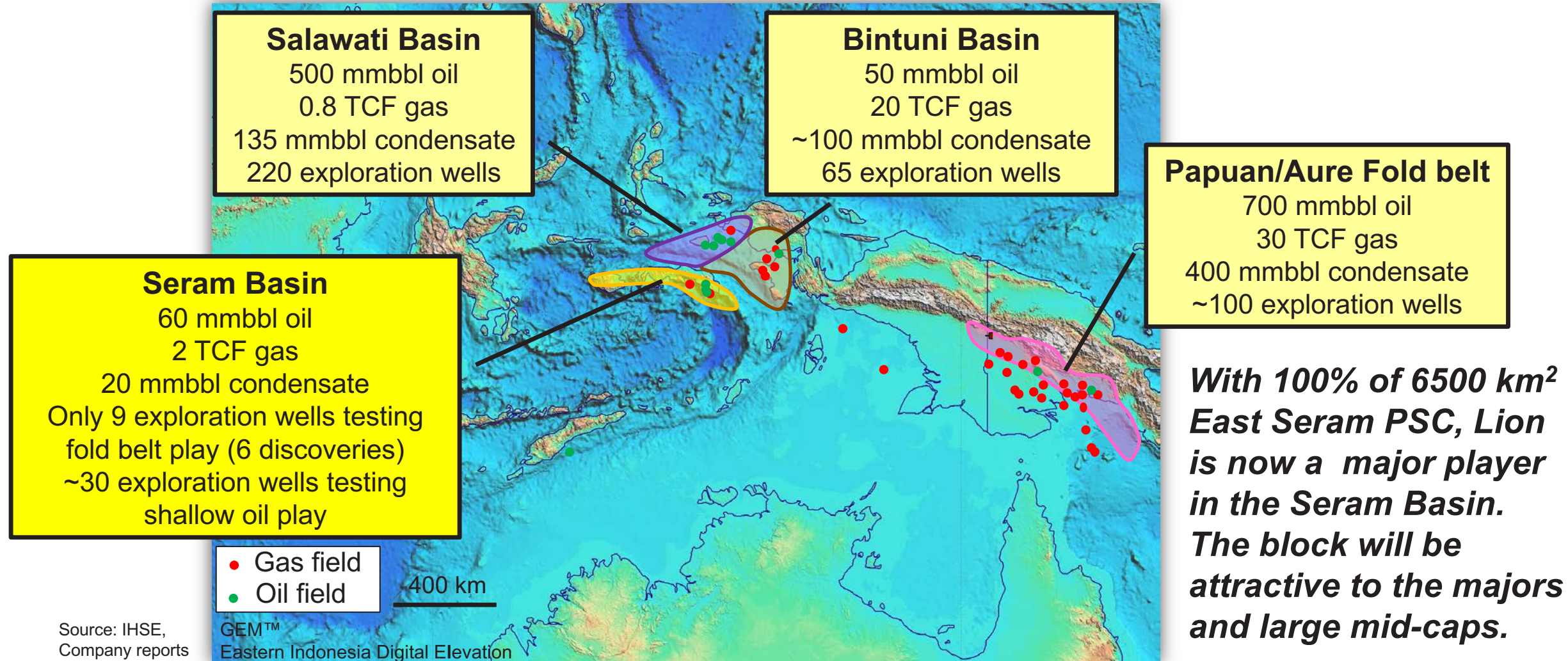
- Seram PSC (2.5% interest) since 2000
 - Production 2000bopd (50 bopd net to Lion)
 - Major gas upside with multi-tcf Lofin discovery
 - Lion active involvement in joint venture
- 1999-2005 Lion (previous name Kalrez) Operator the Seram Bula oil field
 - Lion Director, Russell Brimage, GM of Bula field operations (1999-2007)
 - Lion lead technical evaluation of East Seram Joint Study area



***Lion has been in Seram since 1999,
strong knowledge of area***

Region contains prolific hydrocarbon provinces

Proven Seram Basin fold belt play (partly) analogous to Papuan Fold belt, exciting untapped potential. ~300km from BP's Bintuni Basin Tangguh LNG gas fields.

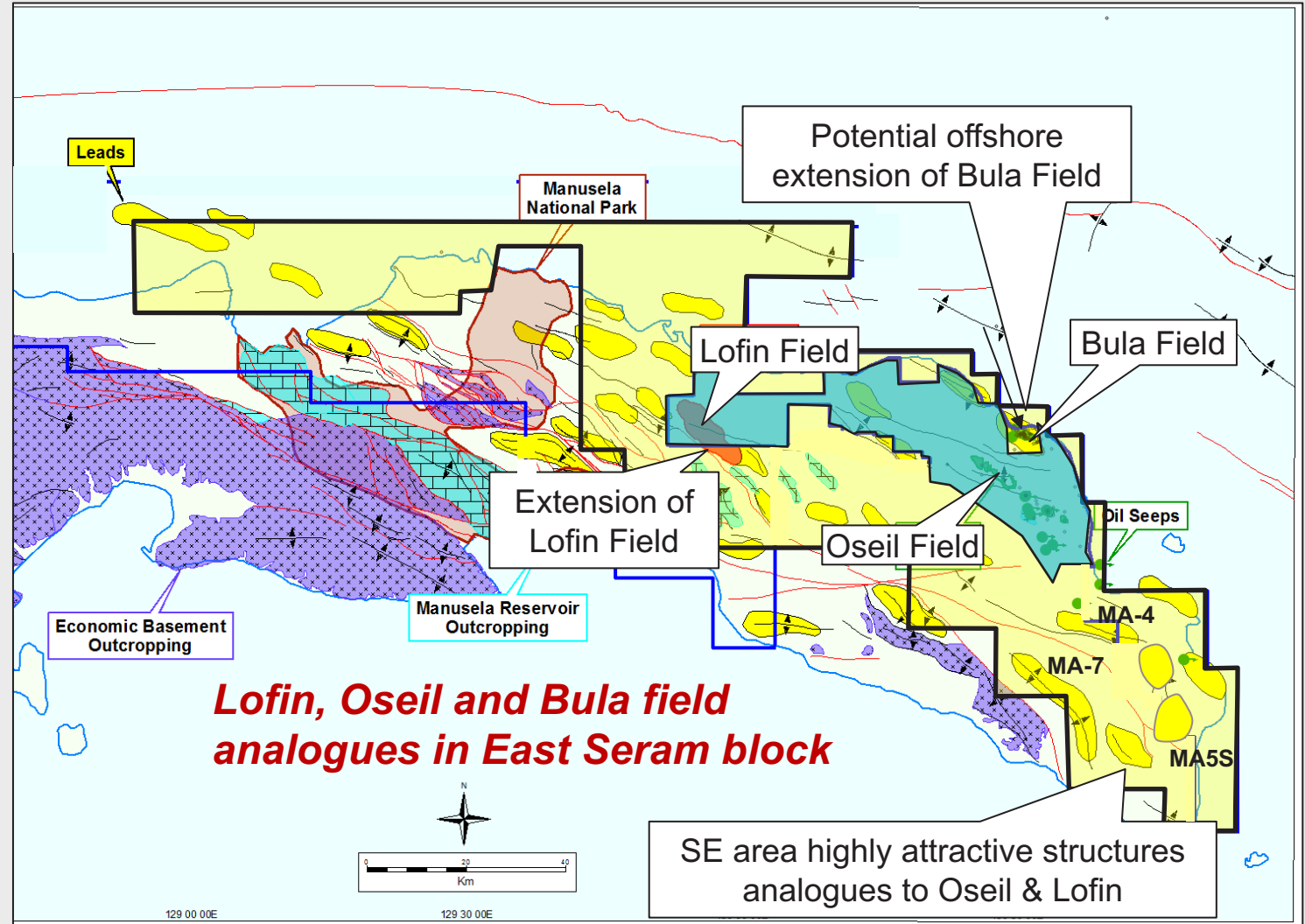


6500 km² block contains multiple targets in world-class structures

Existing low risk resources combined with TCF scale gas leads and 100mmbbl+ oil leads

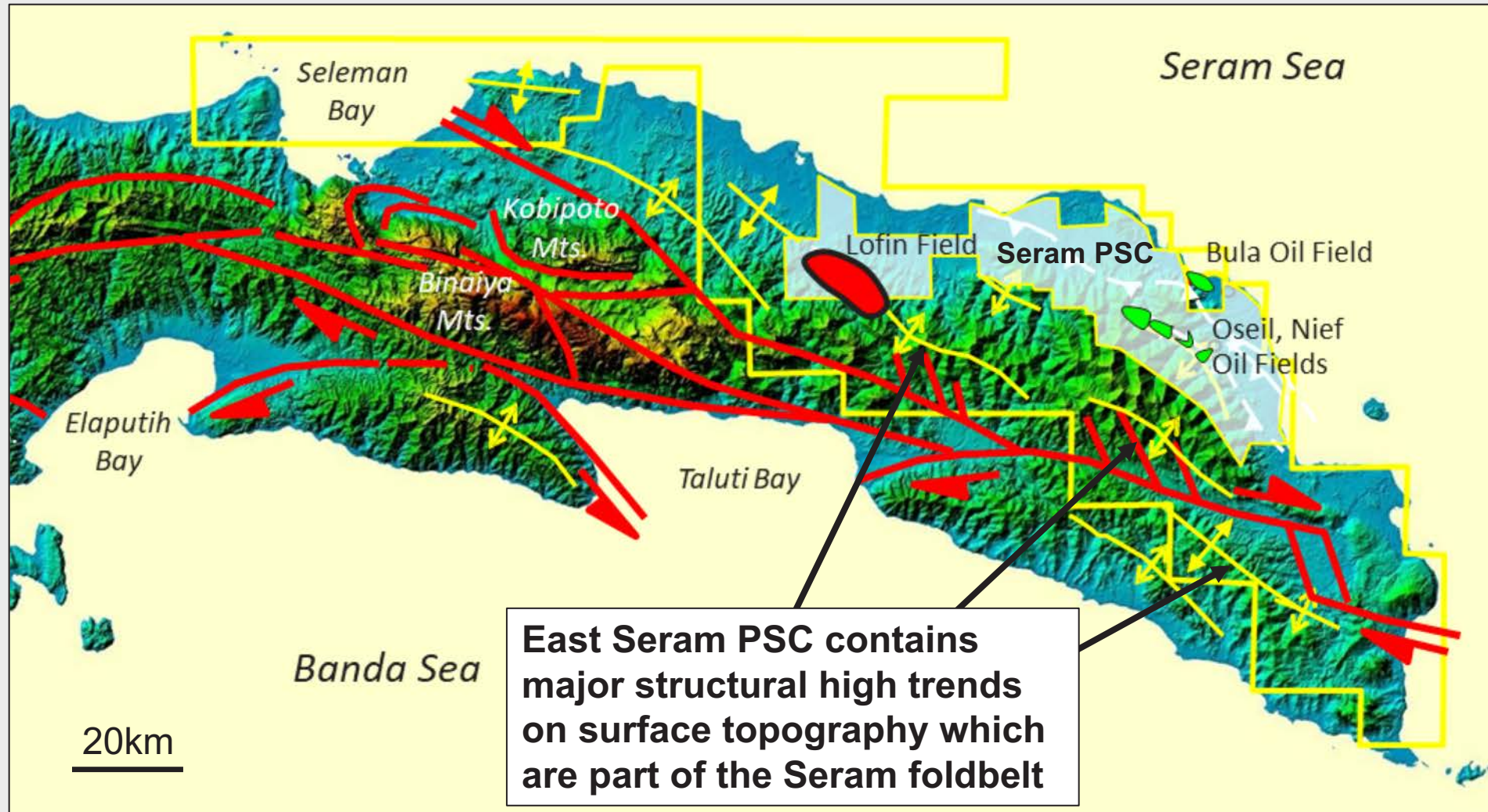
- Seram Island is a proven oil and gas province with producing field and multiple oil and gas seeps
 - Bula Oil Field (~20 mmbbl produced from shallow reservoirs)
 - Oseil Oil Field (17 mmbbl to date from Triassic/Jurassic age Manusela Limestone)
 - 2 TCF Lofin Field - ~1300m gas column in Manusela Limestone defined by 2015 well
- East Seram PSC contains:
 - Numerous large attractive leads related to the Seram Fold belt structures
 - Shallow oil prospects and leads including offshore extension potential of Bula Oil Field

Shallow low cost oil targets (Bula field play) and large, deeper oil and gas targets (Oseil and Lofin analogues) present



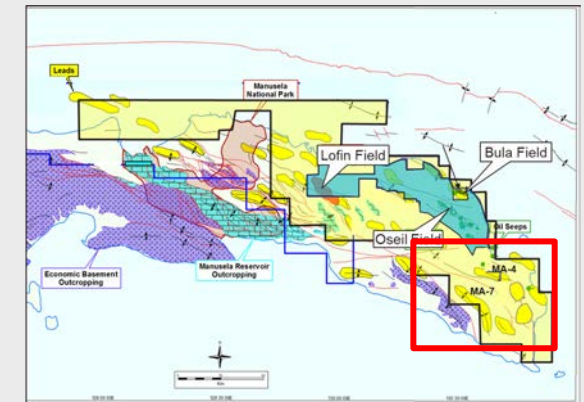
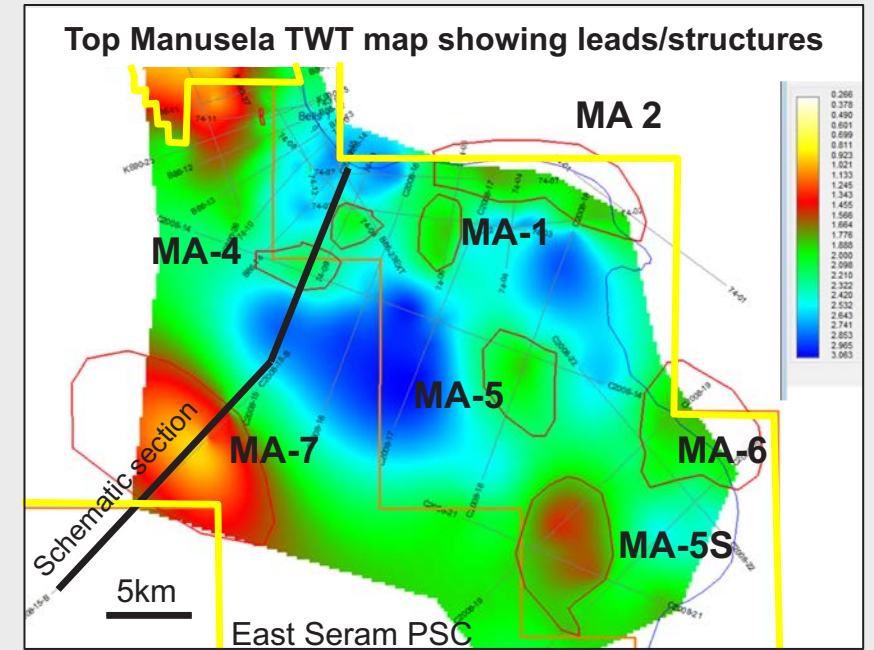
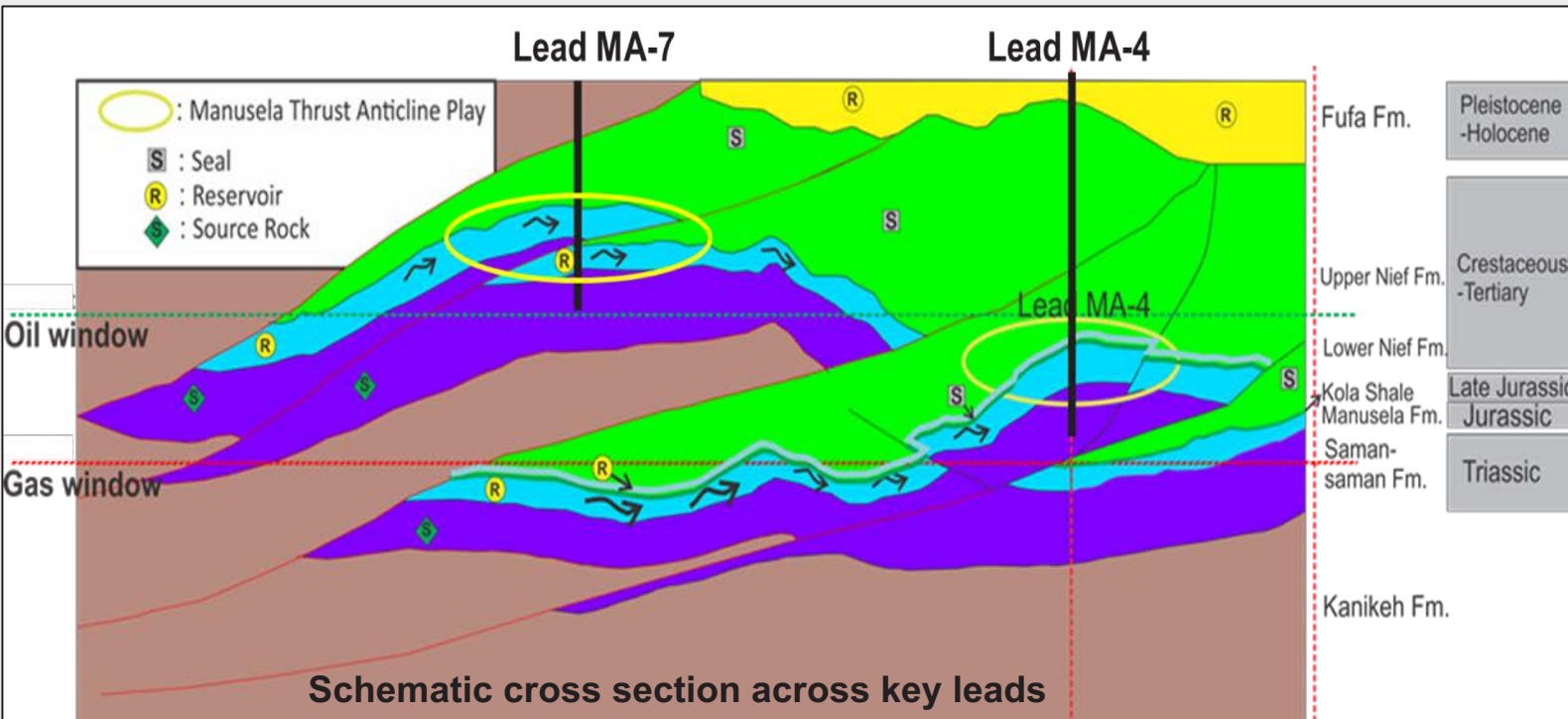
East Seram PSC contains well-defined surface anticlines

Structures (confirmed on available seismic) similar & potentially larger than Lofin & Oseil fields



Highly attractive targets on seismic within East Seram PSC

Potential closures 10-90 km²+, Manusela limestone targets from 1500m to 5000m



PSC has analogue structures to the Oseil and Lofin fields



Thank you

For more information please contact:

Tom Soulsby
Executive Chairman
tsoulsby@lionenergy.com.au
Office: +61 8 9211 1500